

SONATINE SPORTIVE

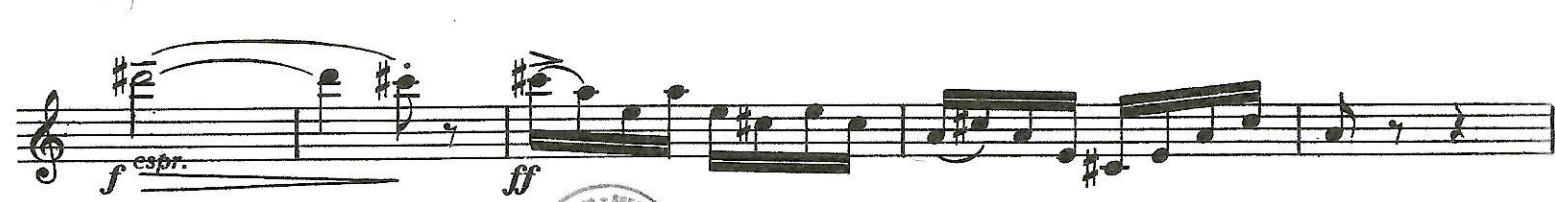
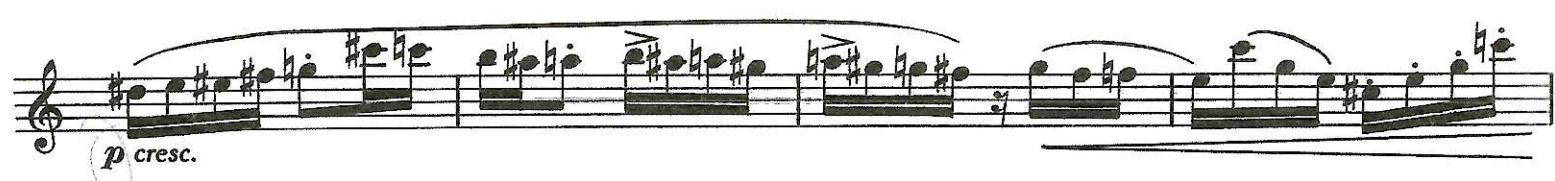
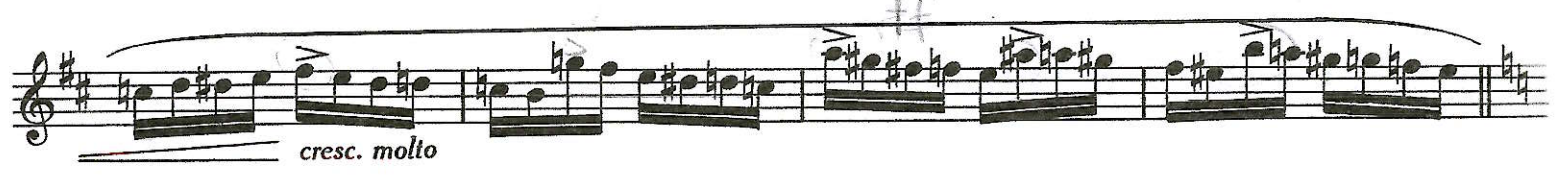
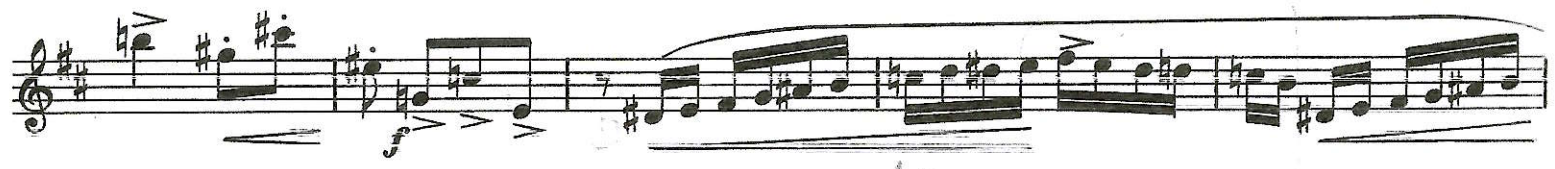
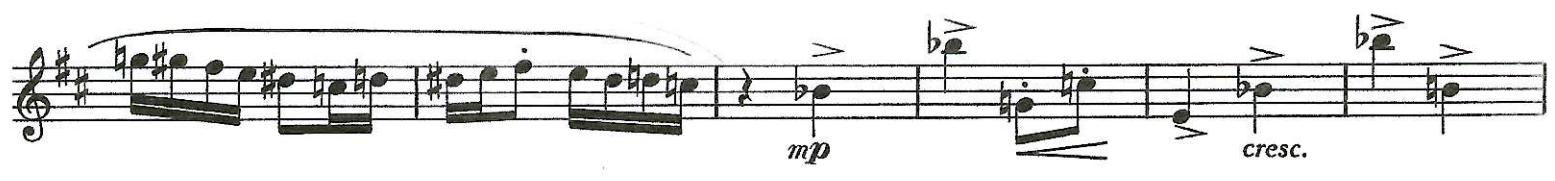
pour Saxophone Alto et Piano

Saxophone Alto Mi \flat

Ouvrage protégé - PHOTOCOPIE INTERDITE même partielle
(loi du 11-03-1957) constituerait contrefaçon (code pénal art. 425)

ALEXANDRE TCHEREPNINE

Allegro (♩=116)



Saxophone Alto Mib

First musical staff with dynamics: *p*, *espr. cresc.*, *espr.*

Second musical staff with dynamics: *cantabile espr.*, *f subito*

Third musical staff with dynamics: *sf*, *mp indifférent*, *cresc.*, *flamenteroso*

Fourth musical staff with dynamics: *espr.*, *calando*, *sf*

Fifth musical staff with dynamics: *mf*, *sf*

Sixth musical staff with dynamics: *cresc.*

Seventh musical staff with dynamics: *f*, *mf*, *f*

Eighth musical staff with dynamics: *mf cresc.*, *sf*

Ninth musical staff with dynamics: *Più vivo*, *f*

Tenth musical staff with dynamics: *rinforzando*

Eleventh musical staff with dynamics: *ff*, *sf*

SONATINE SPORTIVE

pour Saxophone et Piano

Ouvrage protégé - PHOTOCOPIE INTERDITE même partielle
(loi du 11-03-1957) constituerait contrefaçon (code pénal art. 425)

ALEXANDRE TCHEREPNINE

I. LUTTE

SAXOPHONE ALTO

PIANO

Allegro (♩=116)

p

Allegro (♩=116)

sfp

cresc.

cresc.

mp *cresc.* *cresc.*

sfp *crescendo* *sfp crescendo*

cresc.

sf *sf*

f *f*

f *sf* *p cresc.*

p *f espr.*
Sb

This page of musical notation consists of several systems of staves. The first system includes a treble clef staff with dynamics *ff* and *p*, and two bass clef staves with dynamics *sf* and *p*. The second system features a treble clef staff with a *cresc.* marking and a bass clef staff. The third system has a treble clef staff with handwritten numbers 5, 4, 3, 2 above it and a bass clef staff with handwritten numbers 1, 2, 3, 1 below it. The fourth system shows a treble clef staff with a *f subito* marking. The fifth system includes a treble clef staff with a *p* marking and a bass clef staff with handwritten numbers 4, 3, 2, 3, 1 below it. The sixth system has a treble clef staff with markings *sf*, *mp indifferant*, *cresc.*, *f lamentoso*, and *espr.*. The seventh system features a treble clef staff with *sf* and *sf p cresc.* markings and a bass clef staff.

calando

p espr. *sfz* *p*

This system contains the first two staves of music. The upper staff is in treble clef and features a melodic line with a *calando* marking. The lower staff is in bass clef and contains accompaniment with dynamic markings *p espr.*, *sfz*, and *p*. There are some handwritten annotations in the lower staff, including a circled '2' and a '1'.

mf *sf* *sfz*

pp leggiero

This system contains the next two staves. The upper staff has dynamic markings *mf*, *sf*, and *sfz*. The lower staff is marked *pp leggiero* and features a steady eighth-note accompaniment.

cresc.

This system contains two staves. The upper staff has a *cresc.* marking and features a melodic line with some slurs. The lower staff continues the eighth-note accompaniment.

sfz *mf*

leggiero

This system contains the final two staves. The upper staff has dynamic markings *sfz* and *mf*. The lower staff is marked *leggiero* and features a steady eighth-note accompaniment.

First system of a musical score. It consists of three staves. The top staff has a treble clef and contains a melodic line with notes and rests. The middle staff has a treble clef and contains a series of chords. The bottom staff has a bass clef and contains a series of chords. Dynamics include *mf cresc.* and *sf*. A first ending bracket is present above the top staff.

Second system of a musical score. It consists of three staves. The top staff has a treble clef and contains a melodic line. The middle staff has a treble clef and contains chords. The bottom staff has a bass clef and contains chords. Dynamics include *sf*. The tempo marking *Più vivo* appears above the top staff. A first ending bracket is present above the top staff.

Third system of a musical score. It consists of three staves. The top staff has a treble clef and contains a melodic line. The middle staff has a treble clef and contains chords. The bottom staff has a bass clef and contains chords. Dynamics include *rinforzando* and *fp cresc.*. A first ending bracket is present above the top staff.

Fourth system of a musical score. It consists of three staves. The top staff has a treble clef and contains a melodic line. The middle staff has a treble clef and contains chords. The bottom staff has a bass clef and contains chords. Dynamics include *sf*, *sfz*, and *f*. A first ending bracket is present above the top staff.